

ALCEA

ASSA ABLOY



ALKEY

key management system

ALKEY key cabinets

alceaglobal.com

ALKEY key cabinets for critical infrastructure

ALCEA, a brand under ASSA ABLOY, is a global security solutions provider dedicated to safeguarding vital infrastructure worldwide. The brand provides complete security solutions with an ever-evolving range of products for critical utilities, transport, and communications.

ALCEA supports critical infrastructure organisations in their daily operations with ALKEY key cabinets managed by the ALWIN software.

Manual management of keys requires an investment of time, effort and regular monitoring.

ALKEY key management automates processes and provides many benefits.



Benefits

Securing access to resources with:

- Robust and solid key cabinets designed to withstand heavy use;
- Complete traceability, end-to-end audit from the moment the key was removed from the cabinet, identifying the individual responsible for its possession, up until when it returned.
- An alert and alarm system for handling all types of malicious acts.

Optimises access to resources with:

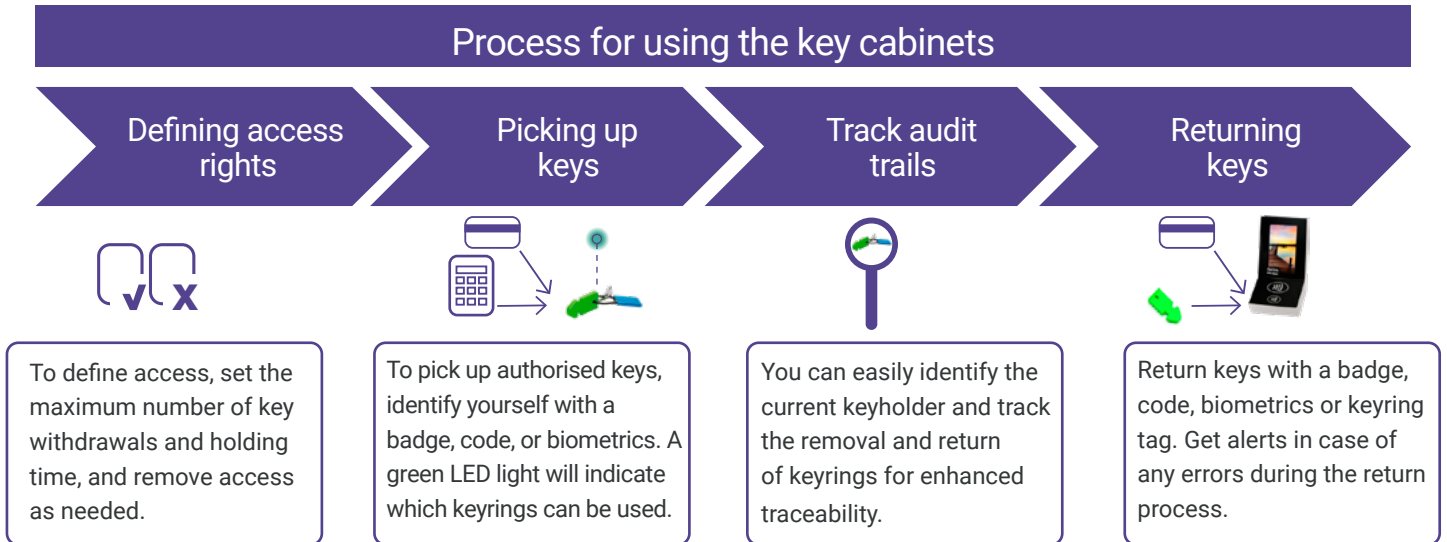
- Quickly and simply identify the authorised keyrings;
- Time and energy saving for management.

ALKEY key cabinets make your key management smooth and easy:

- An interactive and customisable touchscreen
- Vocal assistance supporting users in their choices
- Remote opening for any identified external person

Process

ALKEY cabinets have many functions that can be used throughout the process of managing the keys. These functions include tasks such as defining access rights, assigning keys to individuals, tracking who has taken keys, and returning keys to their proper place in the cabinet.



Configuring and setting up alerts:

If the maximum number of simultaneous withdrawals or the maximum holding period is exceeded, the administrator will receive alerts by email or SMS.

Optional key reservation module:

The Alwin software includes a key reservation module that allows users to reserve keys in advance for easy access.

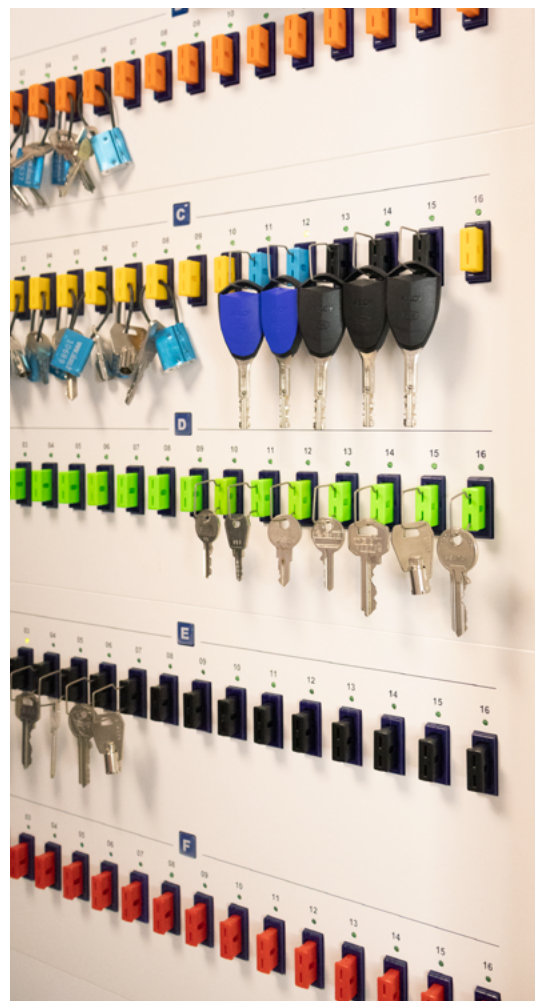
Tracking Audit Trails:

The administrator can track keyholders in real-time using the identification established during pick up and return. Additionally, filtered searches can be performed in the event log, and historical reports can be extracted in different formats such as Excel, PDF, XML, CSV, and XPS.

Returning Keys:

We recommend using employee ID badges for identification in public areas, while tags or PIN codes can be used in access controlled spaces.

If the keyholder tries to return a keyring to a different position than its preset keyhole, the user will be alerted with a visual and vocal alert until it is properly placed in its designated keyhole.



Key cabinets and components

Our key cabinets are modular and can be expanded by multiples of 32 key rings.

We offer three different cabinet sizes to accommodate various needs:

The small model (KMS1) with 32 keyrings

The medium model (KMS3) with 32, 64, or 96 keyrings

The large model (KMS6) with 128, 160, or 192 keyrings

For space optimisation, the large model is composed of two medium models that can be placed side by side or stacked on top of each other.



Components delivered with the cabinet :

Keyholes equipped with RFID key tags and security seals



Emergency release case

8 tags and security seals for spare parts in each order



Touchscreen display

RV/7Ah Battery



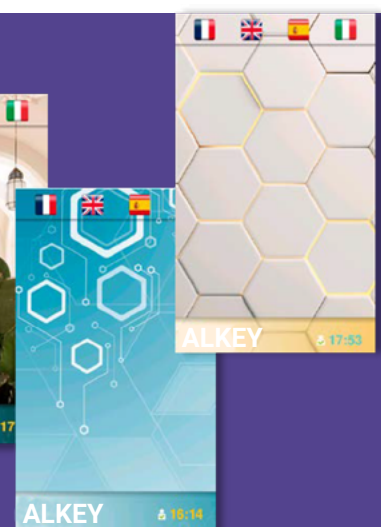
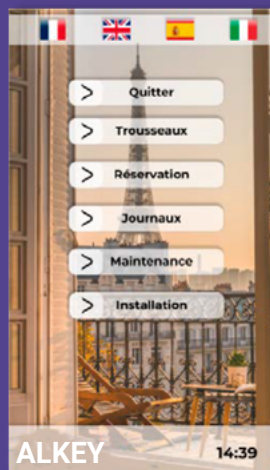
Badge and/or Tag reader

Tag reader

RFID keyrings with security seals:

Our key system features RFID keyrings with security seals and traceable keyring holders. The keyrings come in seven different colors for easy visual identification and quick recognition. Each keyring has an RFID proximity chip that can be used with other access control readers and single-use seals for maximum security.

The touchscreen is capacitive for quick use and simple navigation, while interactive menus provide a user-friendly dialogue. The system is also customisable with the option to create different background images for the touch screen on demand.



Readers

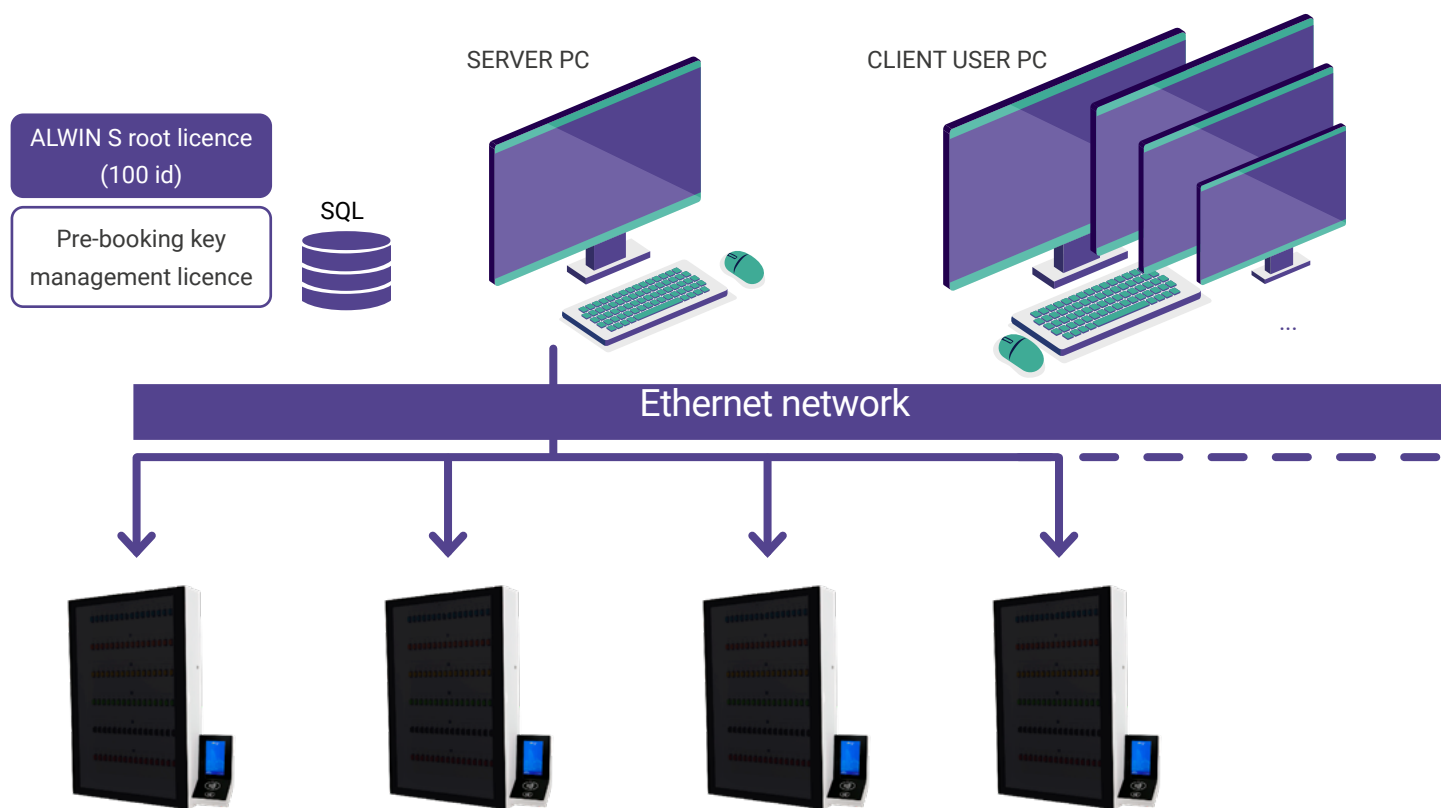
The readers are flexible and can be adjusted to fit the customer's technology, or they can use default Mifare/DESFire readers for badge identification. They are also compatible with ALKEY keyring tags.

In addition, the key cabinet features vocal assistance to guide users. Vocal assistance can be turned on or off using the touchscreen.



System architecture

The architecture is designed to support an unlimited number of key cabinets.



References

| Software | | | |
|-------------------------------|--|---|--|
| ALWIN S root licence (100 id) | 07-07-0205 | | |
| Licence ID | References depend on the number of identifiers required | | |
| Option – Embedded Server | 09-03-0200 | | |
| Hardware | | | |
| Key Cabinets | KMS1 | KMS3 | KMS6 |
| | 09-99-0110 | 09-99-0115 (32) 09-99-0130 (64) 09-99-0150 (96) | 09-99-0180 (128) 09-99-0190 (160) 09-99-0200 (192) |
| Accessories | Additional Tags : 09-02-0311 blue, other colours available | | |
| | Additional security seals : 09-05-0032 blue ALCEA engraved | | |

Characteristics

| | KMS - 1 | KMS - 3 | KMS - 6 |
|---|--------------------------|-----------------|------------------|
| Number of keyrings | 32 | 32, 64 or 96 | 128, 160 or 192 |
| Dimensions Height x Width x Depth (mm) | 428 x 655 x 239 | 972 x 655 x 241 | 2045 x 655 x 241 |
| Casing Touchscreen and tag reader: H x W x D (mm) | 320 x 150 x 120 | | |
| Cover thickness | 15/10 | | |
| Door | Plexiglass 6mm | | |
| Electric Lock | Max tension. 5800 Newton | | |
| Weight | 26 Kg | 46 Kg | 92 Kg |
| Power Supply | 220V – 0.5 A | | |
| Battery Life 7 AH | 12 hours | | |
| Operating Temperature | From 0 to 50°C | | |
| Environment | Interior | | |

| Processor | |
|---|---|
| Processor Characteristics | 1 Ghz 32bits |
| Coprocessors / hardware accelerator | 2 / cryptography AES, SHA, RNG |
| Memory / extension | 512 Mo DDR3L 800Mhz / Micro-SD |
| Graphics | HDMI Interface 16 bit, 1280x1024, 3D processor |
| Peripheral Connection | Audio Input/Output, 2x USB Device/Host |
| External supervisor Connection (BMS or transmitter) | 4 outputs on relays |
| Ethernet Connection | 100 Mbit RJ45 connection |
| Additional Functions | Temperature °C Sensor, Accelerometer, Real-time clock |

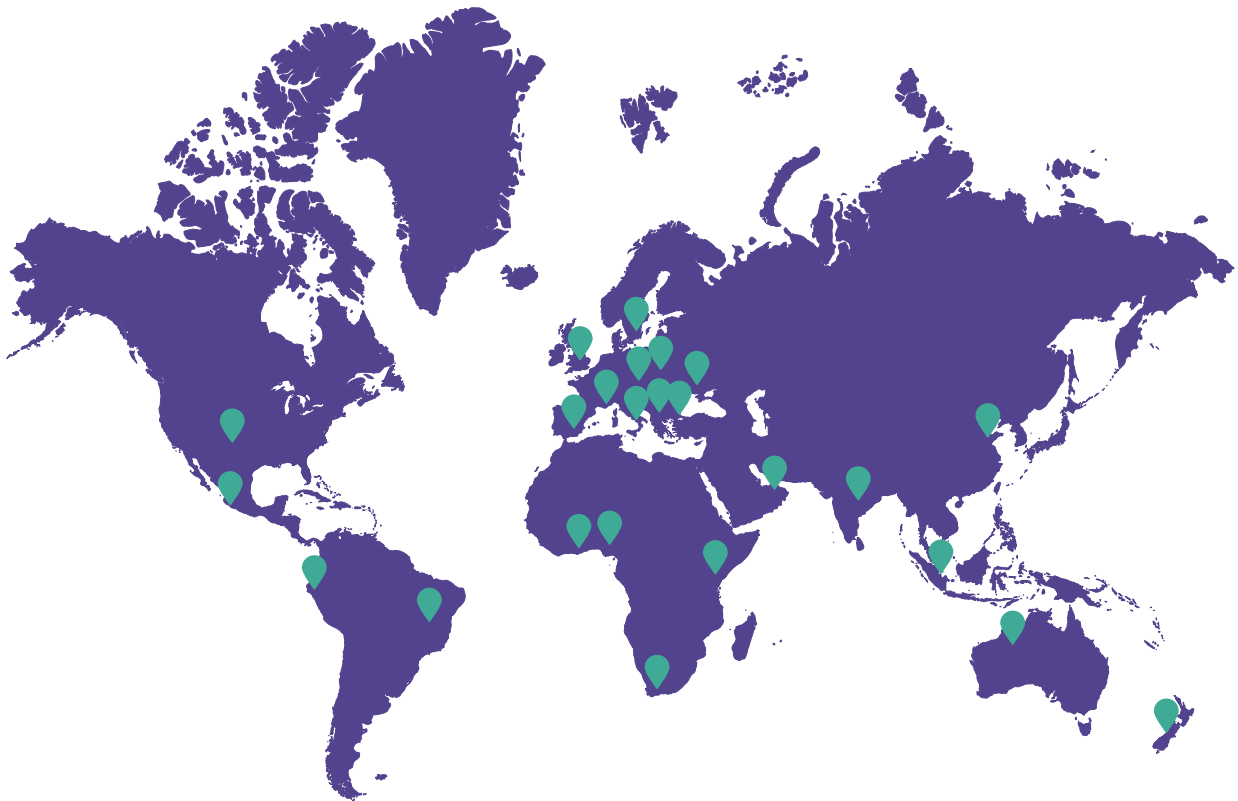
| Touchscreen | |
|-------------------------------|------------------|
| Display Technology | LCD-TFT 7" 16/9 |
| Resolution (number of points) | 800 x 600 |
| Colours | Active / 262 000 |

| Capacity | |
|--------------------------------------|--------------------------------------|
| Maximum number of users | 8 000 (multiple key cabinet version) |
| Maximum number of periods | 128 |
| Maximum number of self-stored events | 3 000 |



global support and worldwide service network

Comprehensive support is provided through a regionally based distribution and service network, as well as certified competence centers.



industries



Telecom



Transportation



Mining



Energy



Water

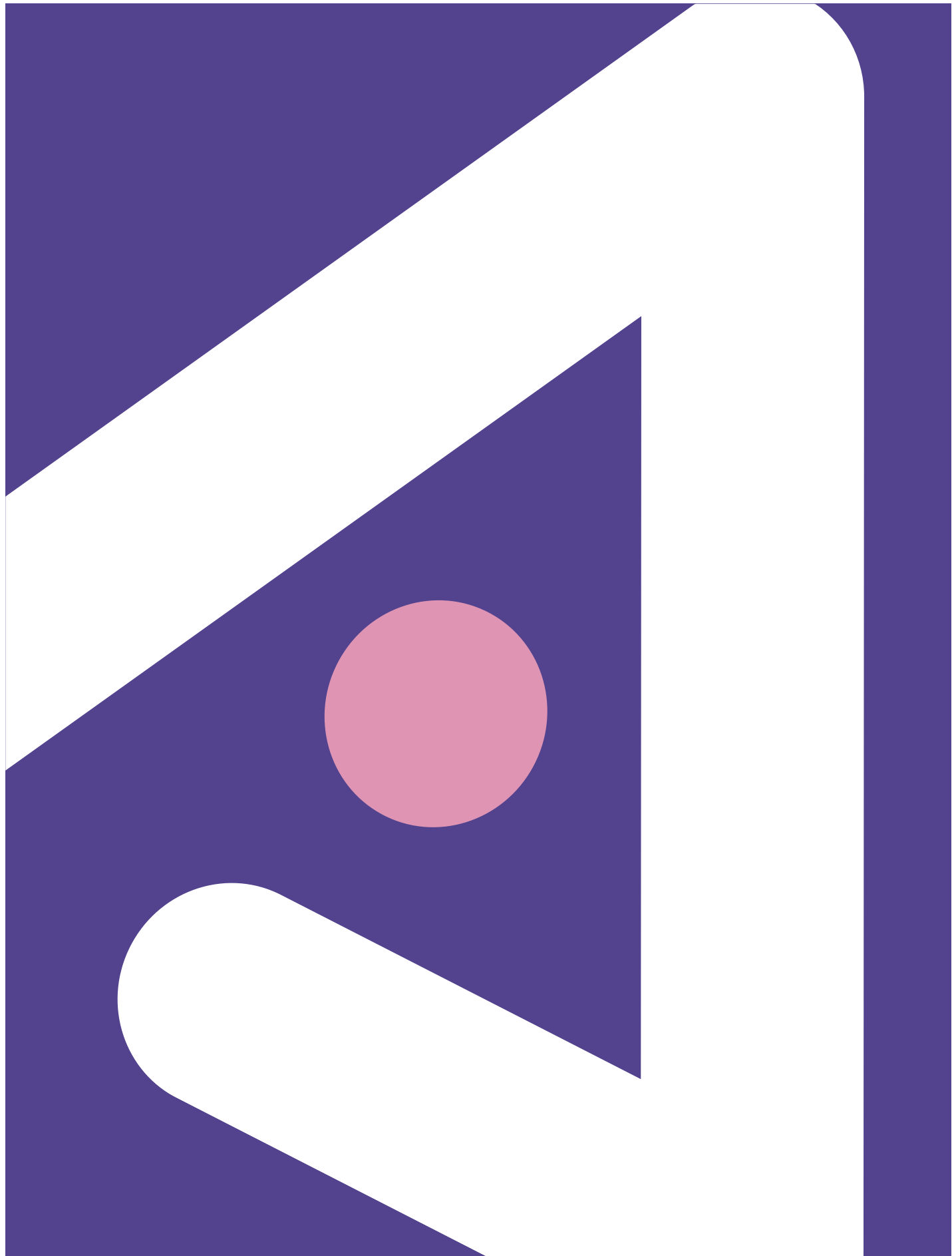


Oil and Gas

contact us

Whatever service, support, or training your critical infrastructure organization is looking for, please do not hesitate to contact us. With our extensive network of professionals, expertise, and customized solutions, we take care of your needs flexibly, swiftly, and easily.





ALCEA specializes in protecting critical infrastructure globally, including energy, water, telecom, transportation, mining, oil, and gas. We provide comprehensive security solutions tailored to your unique needs, from access control and intrusion detection to key and video management. Our experienced specialists deliver customized, digitalized solutions that enhance efficiency, ensure compliance, and offer peace of mind.

© 2024 ALCEA/ASSA ABLOY AB. All rights reserved. This publication is for informational purposes only, without representation or warranty of any kind and the details provided herein are subject to change without advance notice.



alceaglobal.com