

**Front Side** – Double-sided Anti-Cutting shield



**Back Side** – Single-sided Anti-Cutting shield

# ALCEA WILOA Padlock WEL-01C

access redefined for  
critical infrastructure.

## Product description

- Keyless access operated via Bluetooth
- Geofencing, facial recognition and time-based access management unlocks
- 20 000 operation exchangeable battery
- Management of permissions based on user and access profile
- Activity log
- Offline mode available

## 1.0 General specifications

No.	Item	Detail
2.1	Model	WEL-01C
2.2	Description	Keyless Smart Heavy-Duty Padlock
2.3	Encryption Method	AES Encryption
2.4	Dimensions (mm)	135 x 78 x 35
2.5	Weight	885 g
2.6	Shackle Diameter	Φ 10 mm
2.7	Working Voltage	3.6 V with emergency Bypass 5V, provided with proprietary adapter
2.8	IP Rating	IP 68
2.9	Warranty	2 Years
2.10	Bluetooth	BLE 5.0
2.11	Operating Distance	< 10m
2.12	Battery	ER14335H Replaceable Lithium Battery

## 2.0 Main materials

No.	Item	Detail
3.1	Lock Body and Shackle	SUS304
3.2	Power Button	SUS316

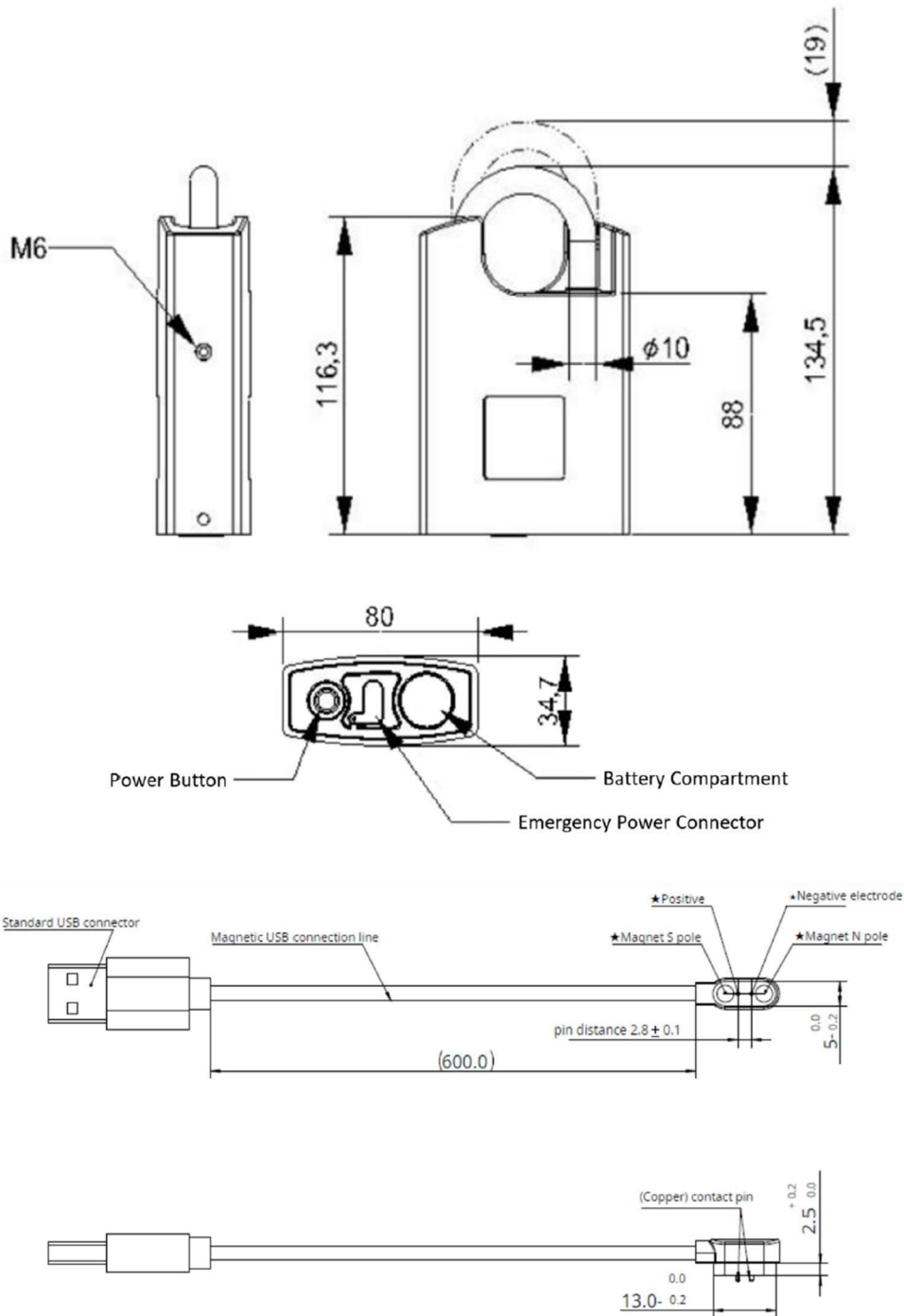
## 3.0 Ambient conditions

No.	Item	Detail
4.1	Operating Conditions	Temperature: -20° to 60°C
4.2	Storage Conditions	Temperature: -40°C ~ +85°C, Humidity: 0 ~ 95%
4.4	Warranty period of electronic parts	2 years

## 4.0 CE Essential Requirements Tested

No.	Essential Requirement	Standard Number & Version
5.1	Radio (Article 3.2)	ETSI EN 300 328 V2.2.2(2019-07)
5.2	EMC (Article 3.1b)	ETSI EN 301 489-1 V2.2.3 (2019-11) ETSI EN 301 489-17 V3.2.4(2020-09) EN 55032:2015+A11:2020 EN 55035:2017+A11:2020 EN IEC 61000-3-2:2019 EN 61000-3-3:2013/A1:2019
5.3	Health (Article 3.1a)	EN 62479:2010. EN 50663:2017
5.4	Safety (Article 3.1a)	EN 62368-1:2014+A11:2017

## 5.0 Dimensions



This content is protected by Intellectual Property Rights Laws. The title to the content shall not pass to you, and instead shall remain with ASSA ABLOY Group or a third party holding the title. ASSA ABLOY Group develops continuously the products and solutions offered. Therefore, the information contained in the document is subject to change without notice. ASSA ABLOY GROUP PROVIDES THIS CONTENT ON AN "AS IS" BASIS WITHOUT ANY WARRANTIES OF ANY KIND, EXPRESS, IMPLIED, OR STATUTORY.