

A close-up photograph of a hand using a key to unlock a silver ABLOY lock on a dark door. The hand is wearing a blue patterned shirt. The lock has the ABLOY logo on it. The background is a light-colored wall with some paper scraps.

ABLOY® KEY SYSTEMS

**Locking
solutions for
every need**

ABLOY

Cylinder Technology

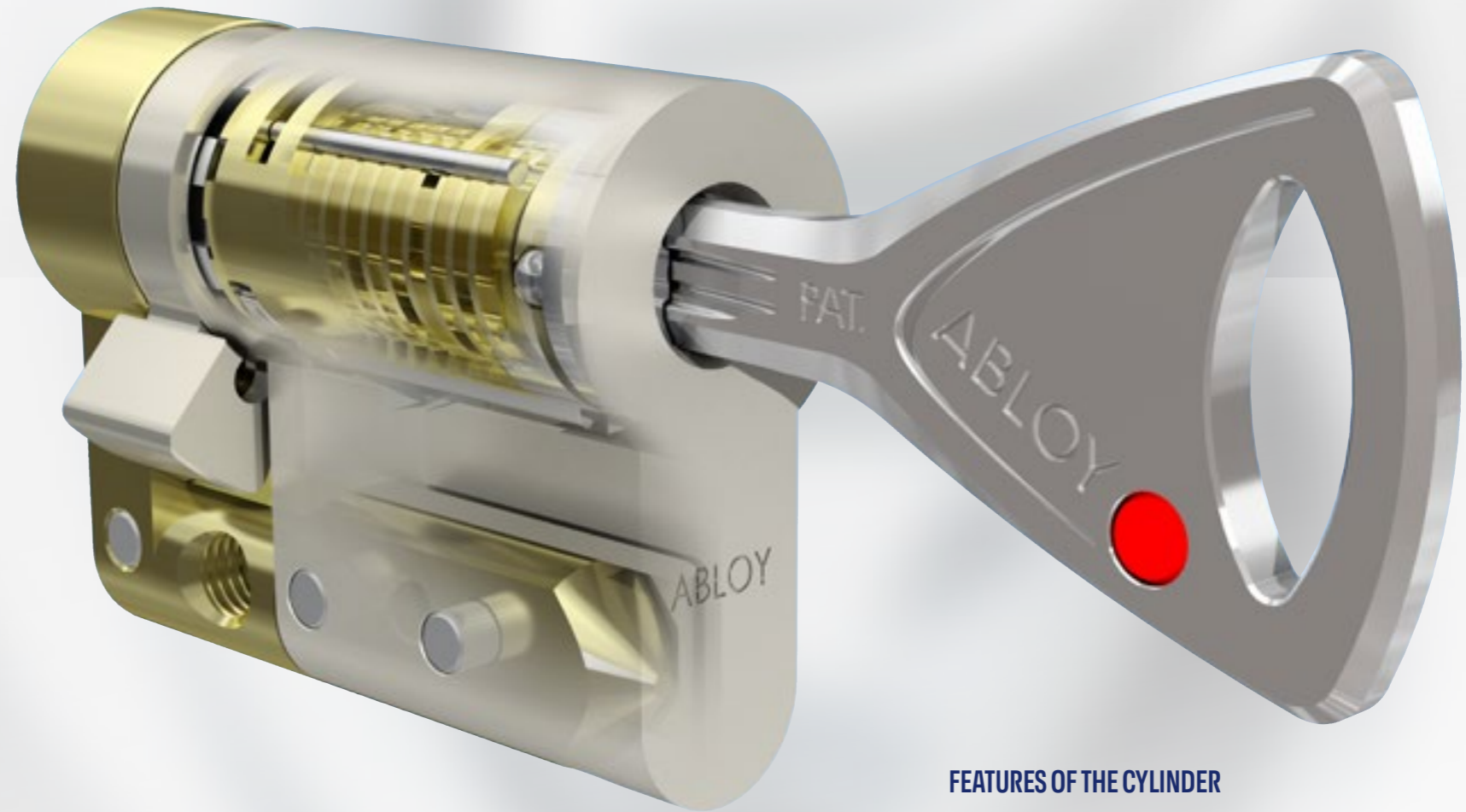
Abloy Oy is known as the world's leading manufacturer of high security locks and developer of rotating disc technology cylinders.

The unique ABLOY cylinder mechanism, based on the use of rotating discs instead of traditional springs and pins, has been a symbol of high security and superior performance ever since its invention in 1907. The technology is widely known by security professionals as the world's premium high security locking solution and offers numerous unsurpassed features and benefits over other cylinder technologies.

While the core of the cylinder mechanism remains the same, the outer housing can be changed to meet the requirements of a multitude of applications. Our extensive

product range means that we can secure numerous applications, ranging from door environments to industrial functions and equipment. Products are designed and manufactured to meet and exceed requirements of several international, national and customer specific standards.

Continuous R&D is crucial when developing new cylinder systems to meet our customers' highest security needs. During the years, Abloy has provided high security and innovative patented cylinder platforms, all based on the rotating disc cylinder mechanism.



FEATURES OF THE CYLINDER

- ROTATING DISC TECHNOLOGY
- SUPERIOR MASTER KEYING FEATURES
- PATENTED KEY SYSTEM
- RESISTANT TO MANIPULATION
- TAILOR MADE

ABLOY CYLINDER SYSTEM EVOLUTION



1920
CLASSIC



1963
PROFILE



1982
DISKLOCK



1983
PROFILE
Multi-Groove



1992
DISKLOCK
PRO



1995
EXEC



2001
PROTEC



2010
SENTRY



2010
NOVEL



2011
PROTEC²
PROTEC² CLIQ™

Master Keying

With Abloy Oy, a variety of products can be keyed into one master key system allowing users to carry a single key.

Careful planning is the basis for long-term success of the master key system, ensuring the customers safety and security. It is possible to create multi-level master key systems each with unique access rights for different user groups.

Superior master keying features are offered based on our vast number of different key combinations without compromising security. Expandable locking systems can be designed to cover large and extensive facilities.

To meet the customers' specific needs it can be created e.g. by:

- geographical area
- building
- floor
- department
- functional field or unit
- key user by function



Abloy Oy offers locking solutions from individual needs to systems which are designed to cover large and extensive facilities.

Products, customer segments, security

ABLOY products are selected as the first choice of the professionals in countless applications around the world to fulfill general security needs as well as professional requirements.

Duplication of patented keys is strictly controlled. The security level of additional keys varies from local service to highly restricted procedures.



ABLOY® CLASSIC

A general level of keying. Recommended for individual locking, such as drawer or mailbox. Secure, reliable cylinder when key control is not a priority.



ABLOY® SENTRY

High security solution for industrial applications such as machines and devices. Duplication of keys is strictly controlled. Patented until 2027.



ABLOY® NOVEL

High security solution for public and private sector, whether it is a school, hospital, office or apartment. Duplication of keys is strictly controlled. Patented until 2027.



ABLOY® PROTEC² | PROTEC² CLIQ™

The ultimate locking solution offers Abloy's highest level of security for professional end users. Improve your security with a system that combines the best of Abloy's mechanical and electromechanical technology, in a digital CLIQ solution. PROTEC² is patented until 2031.

SECURITY LEVEL

MEDIUM

HIGH

SUPERIOR



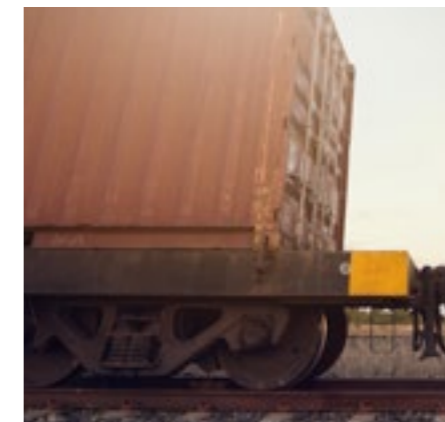
PERSONAL SECTOR

Individual locking needs such as storage rooms.




COMMERCIAL SECTOR

Many different users for the same locking application.



INDUSTRIAL SECTOR

Many different users with different access rights.



It is the customer's responsibility to define the required level of security. To achieve the overall level of security required in the customer's operations, in addition to a locking system, multiple layers of security must be in place. These include key, access management and alarm systems, as well as physical security in a manner and level specified by the customer.

ABLOY offers security and locking innovations dedicated to creating more trust in the world. Combining digital and mechanical expertise, Abloy Oy develops industry-leading security solutions that protect people, property and business. Abloy is part of the ASSA ABLOY Group, the global leader in access solutions. Every day, we help billions of people experience a more open world.

Abloy Oy
Wahlforsinkatu 20
P.O.Box 108
FI-80101 Joensuu | Finland
Tel. + 358 20 599 2501
Abloy.com

This content is protected by Intellectual Property Rights Laws. The title to the content shall not pass to you, and instead shall remain with Abloy Oy or a third party holding the title. Abloy develops continuously the products and solutions offered. Therefore, the information contained in the document is subject to change without notice. ABLOY PROVIDES THIS CONTENT ON AN "AS IS" BASIS WITHOUT ANY WARRANTIES OF ANY KIND EXPRESS, IMPLIED, OR STATUTORY."



8807130 | 06/2022